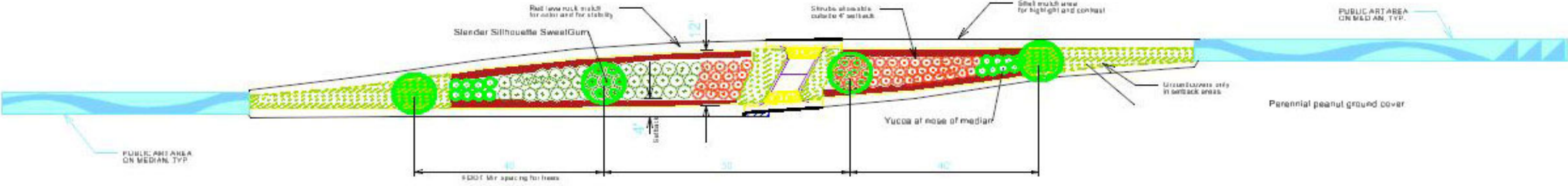


# N. WESTSHORE BOULEVARD

## WESTSHORE BOULEVARD LANDSCAPE AND PUBLIC ART PROJECT



BY:



TERRA  
TECTONICS  
design group, inc.

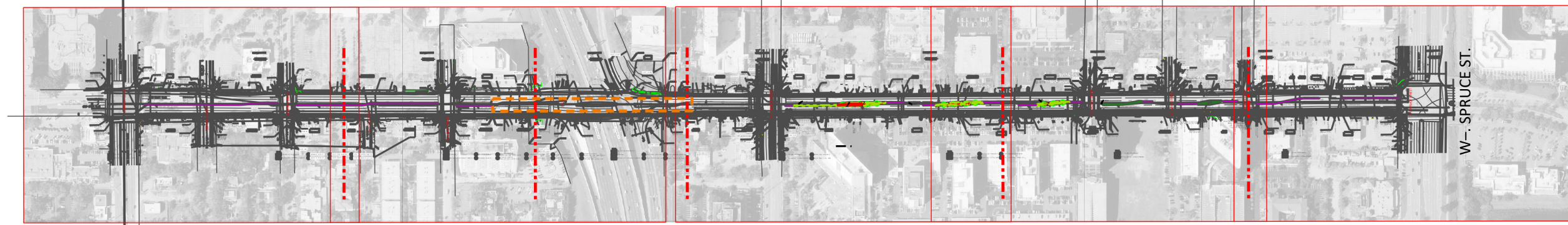
1

2

3

4

5



KENNEDY BLVD.

N. B STREET

W. GRAY STREET

1-275

W. CYPRESS ST.

W. LAUREL STREET

W- SPRUCE ST.

OVERALL PROJECT LIMITS



**Project Contract Scope:**

Design landscaping for three medians on N West Shore Boulevard from W Cypress Street to W Spruce Street. The Firm chosen will be asked to design public art features where possible for the remaining concrete traffic separators between W Kennedy Boulevard and Spruce Street.

**PROJECT RECOMMENDATIONS:**

**INTRODUCTION**

Project design scope for Planting and Public Art enhancement to Fourteen (14) separate and attached concrete medians and Three (3) landscape medians within N. Westshore Blvd from just N. of Kennedy Blvd. to W. Spruce. Project concepts proposed and shown in this document are for surface treatment of the existing concrete medians with concrete stain and removing old soils and replacing with viable planting soils and landscape plantings in three medians to create enhanced sustainable plantings.

**Pedestrian Crosswalks:**

The existing crosswalks at Cypress & Gray are worn and mashed into the asphalt and have been built-over and repaired over time. We recommend the crosswalks be replaced with high-strength concrete in a City of Tampa familiar stamped concrete hex pattern adding sustainable long term aesthetic appeal. We recommend a simple light gray high-strength concrete rather than any colors or brick patterns. This has been used successfully at Columbus Drive and Howard-Armenia frontage roads along I-275.

**Graphic Concrete Stain:**

Applying graphic concrete stains in the colors chosen by the Alliance, to Westshore Blvd. medians to transform these spaces into vibrant public art pieces. This cost-effective sustainable technique involves staining concrete with artistic patterns and designs, creating visually engaging and durable surfaces. The patterning can reflect the angular graphics chosen by the TWI project at the nose of each median and then blend into a more flowing design along most of the medians.

**Sustainable Plantings:**

Using native and drought-resistant plants such as Ixora and Zampa and Japanese Blueberry adds color, texture & greenery and beauty but also supports local ecosystems and requires less maintenance. In the center of two of the medians, dramatic use of larger agave, sun tolerant bromeliads, and other low-water requirement plantings could provide striking visual interest while needing little or no maintenance, maximizing the safety of maintenance workers. Current plans show the use of Zamia and Ixora.

**Median Soil Replacement:**

We recommend removing and replacing the upper 12" of median silds and replacing with good quality Topsoil more suitable for plantings.

**Irrigation:** Upon site inspection we have found the reclaimed water connections for the irrigation water. This can be for construction and then for long term ongoing requirements. The final project design will have to be coordinated and accepted by the City of Tampa Parks Department for inclusion in their upkeep and maintenance for the irrigation system.

**Plant materials purchase:**

We would recommend that the major items for consideration be purchased in advance by the Westshore Alliance to make sure the plant materials are available, and no substitutions are proposed that would change the concept of the plans and approved design.

**Additional Items for consideration:**

**Crushed Red Lava Rock** is proposed for the edge of the medians for not only sustainability but for reduction of maintenance by keeping the organic pine bark mulch in place when cars pass by, which tends to blow the mulch away. It will also hold the center pine bark mulch under the plantings in place during wind and rain events.

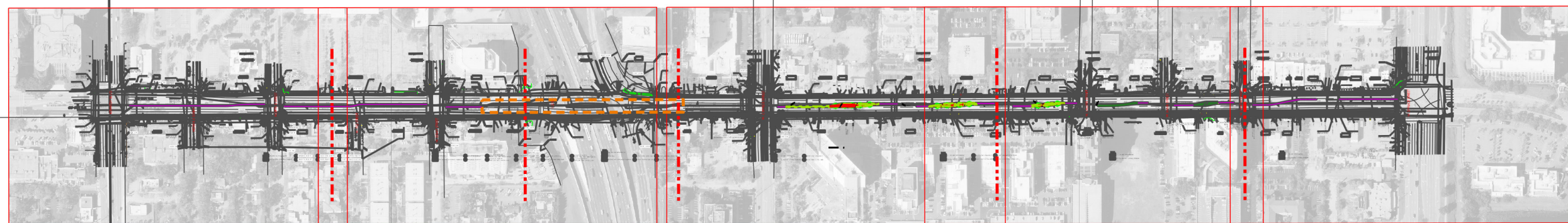
**LED Lighting:** Possible Integrating LED lights into the medians can provide both functional illumination and decorative lighting effects, making the medians attractive during the night, for uplighting of trees. This will need to be approved by FDOT and County and City of Tampa for safety requirements.

**Textured Surfaces and Materials:** Utilizing different textures and finishes in materials, such as stamped concrete or patterned tiles, polished large- and small-scale polished multiple colored river rock, which can create tactile and visual variety, enhancing the visual experience.

INTRODUCTION



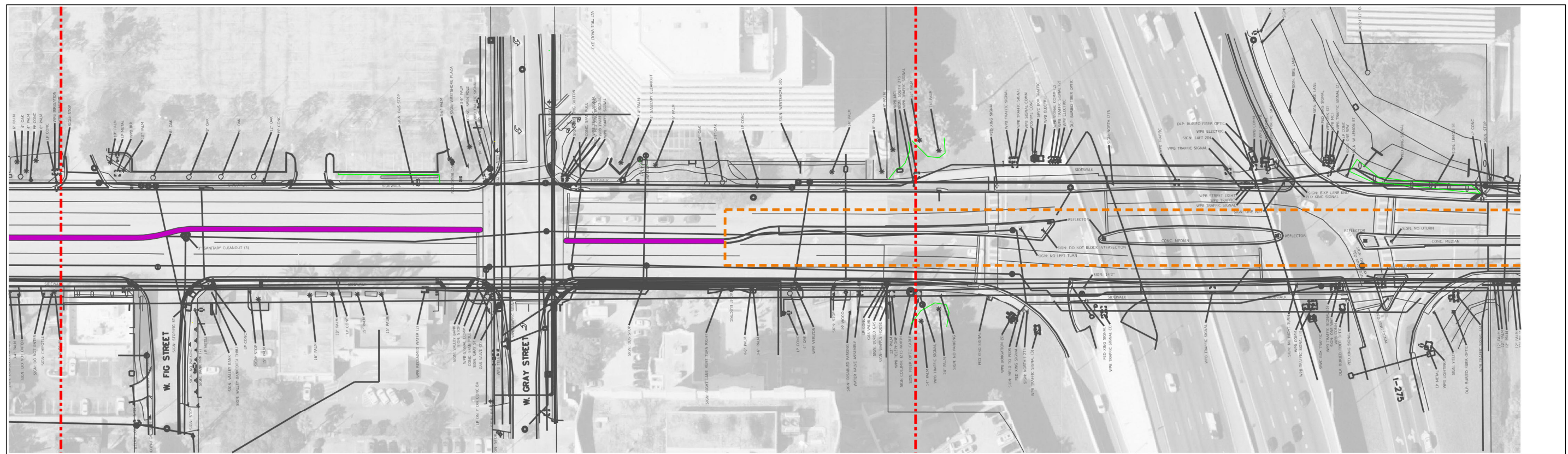
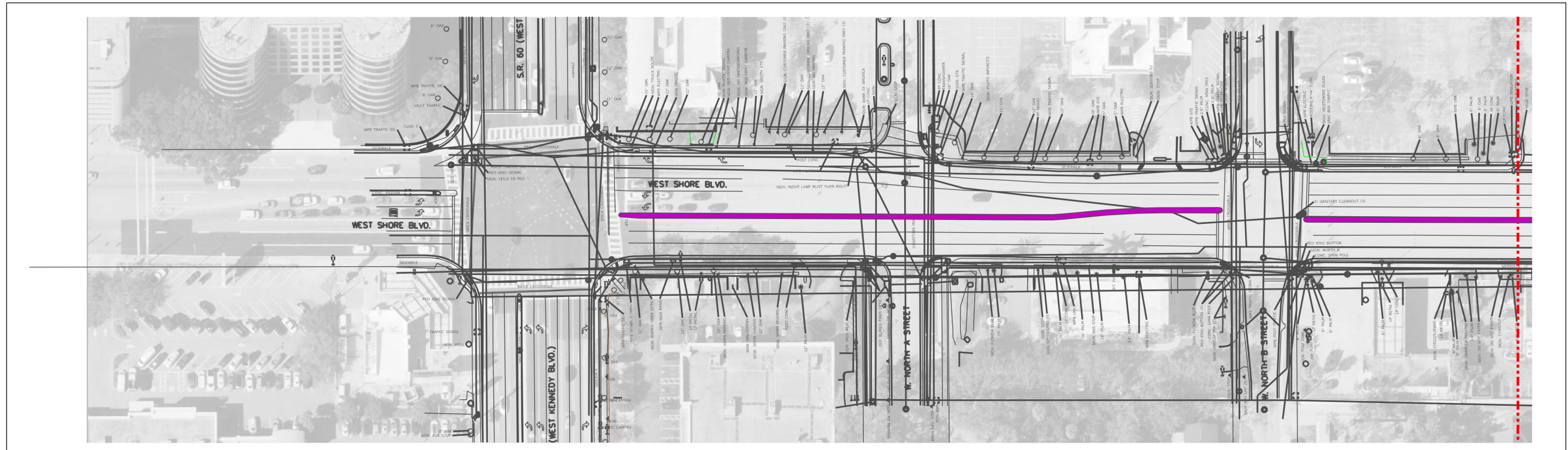
1 2 3 4 5



OVERALL PROJECT LIMITS 

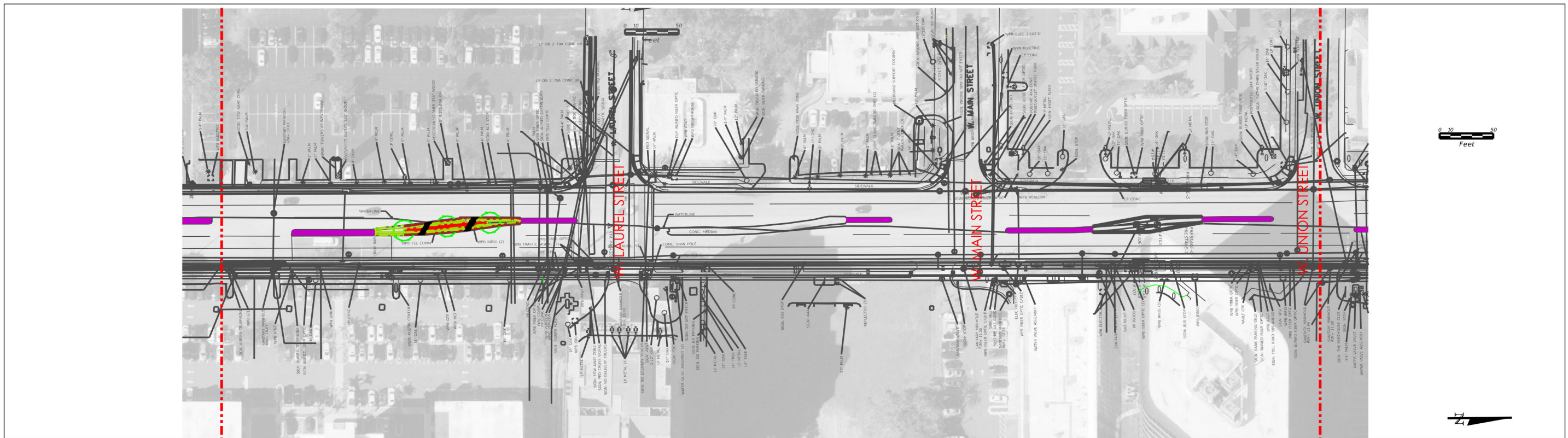
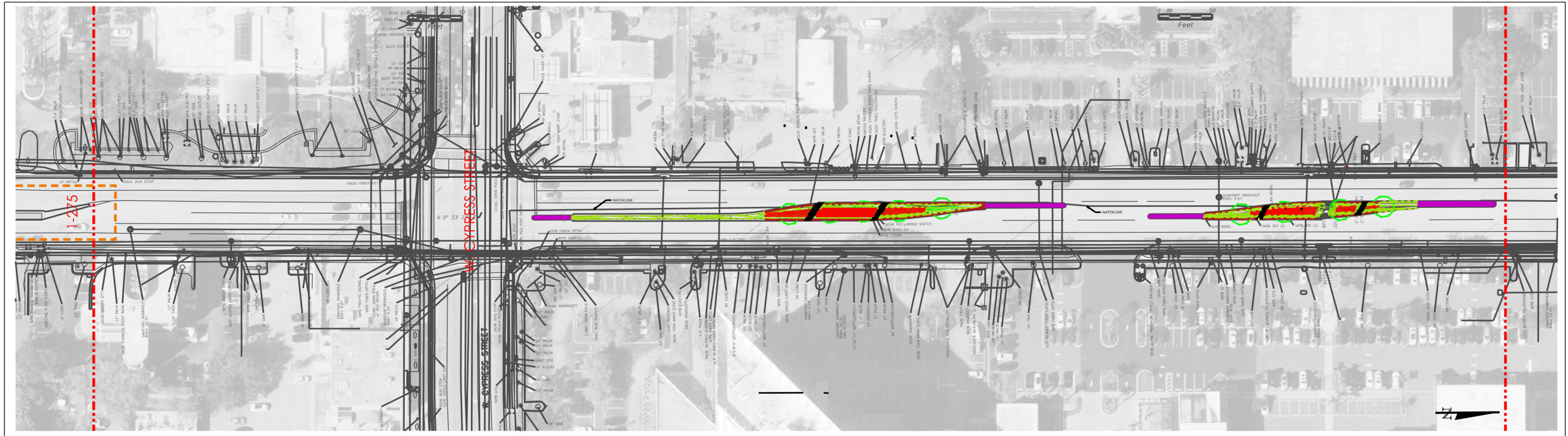
OVERALL PROJECT LIMITS





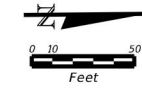
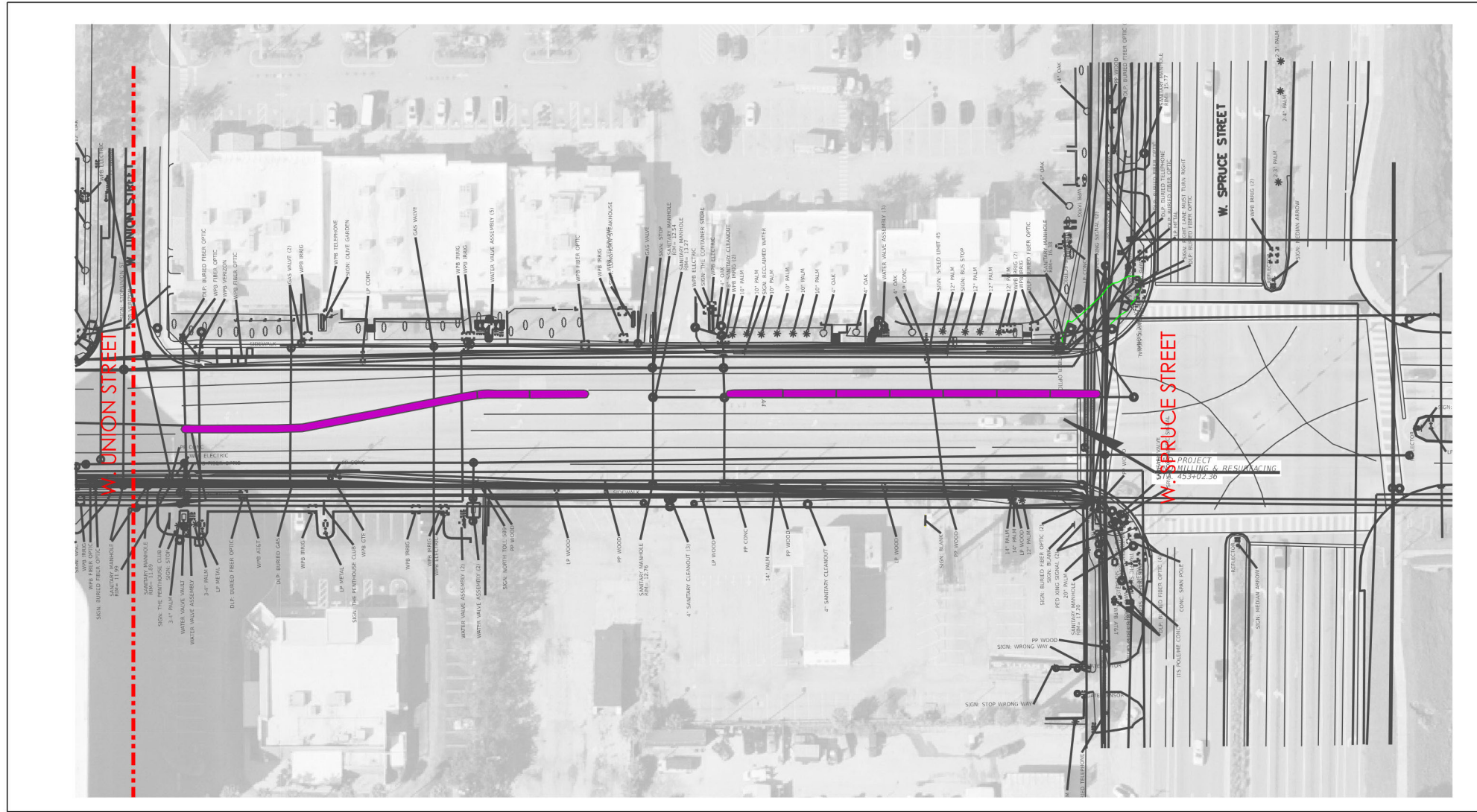
SHEETS 1 & 2





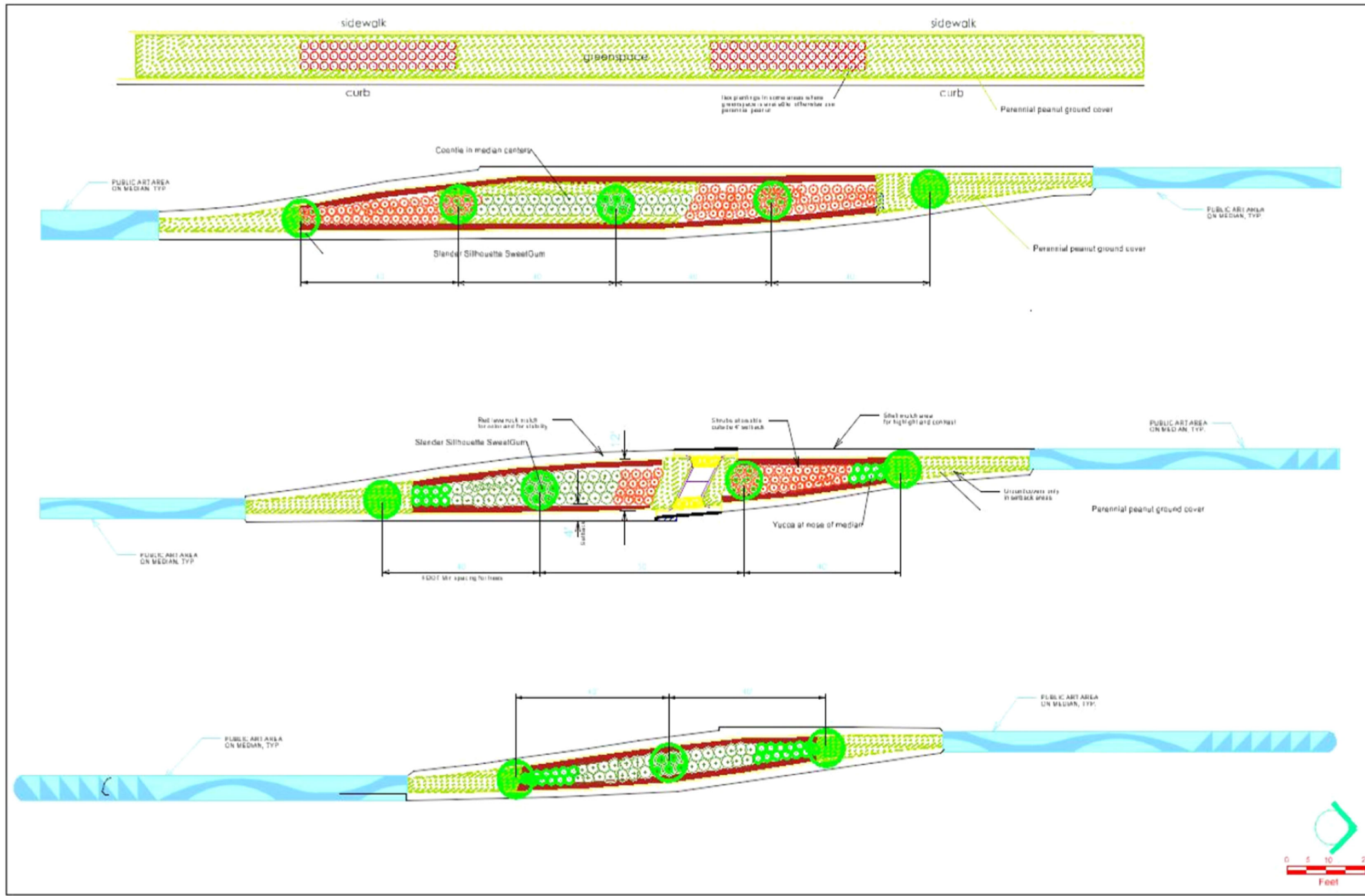
SHEET 3 & 4








SHEET 5





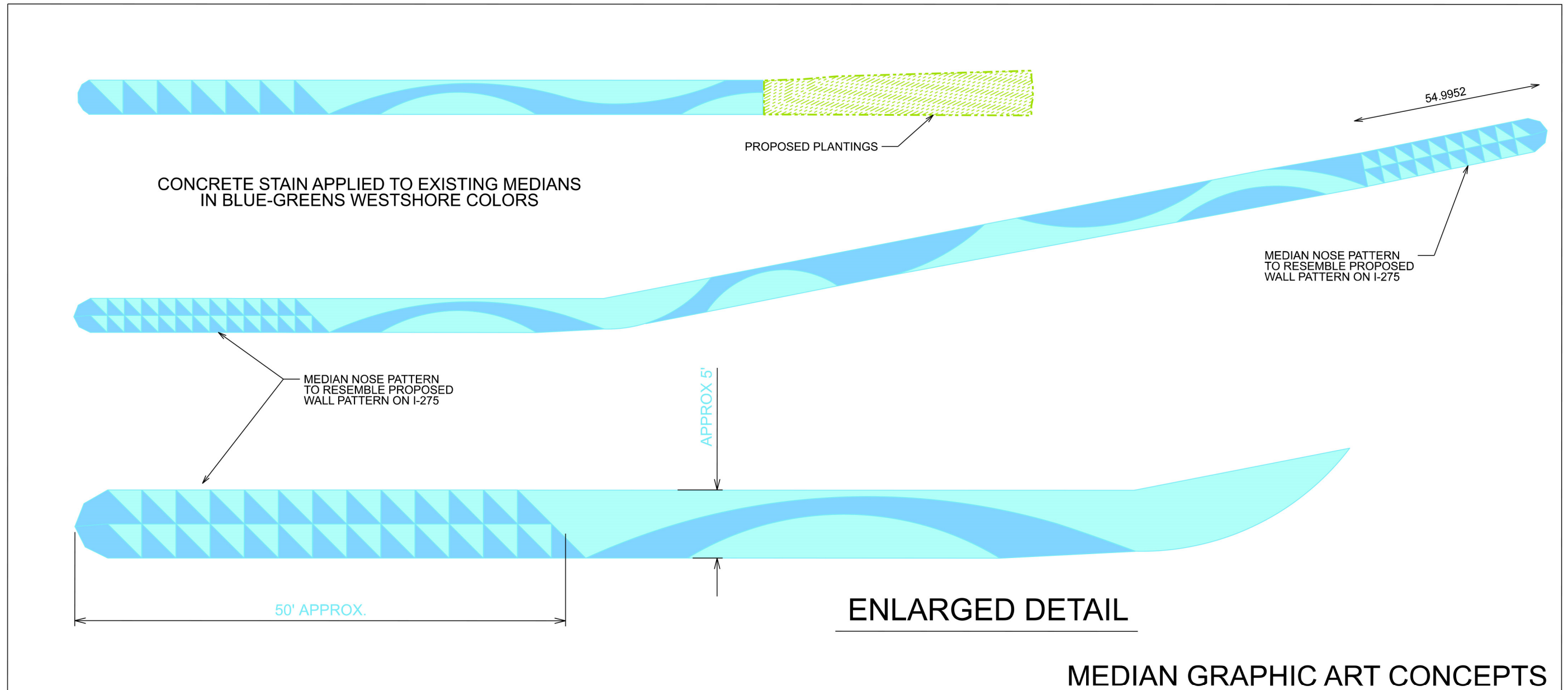
### PLANTING LEGEND

-  SWEET GUM 'Silhouette'  
4" cal. 22' tall x 3' width B+B
  -  Dwarf Ixora 'Yellow'  
7 gal 24" X 16"
  -  Coontie  
15 Gallon 3' X 3'
  -  YUCCA gloriosa  
7-gallon 24" dia
  -  ILEX vomitoria 'shellings'  
3 gallon 12" x 12"
  -  Perennial Peanut Sod
  -  Red Lava Rock 3/8" Mulch
- Plantable Area outside setbacks

All plantable areas to receive Pine Straw Mulch

MEDIAN LANDSCAPE AREAS

## PLANTING PLANS-MEDIANS

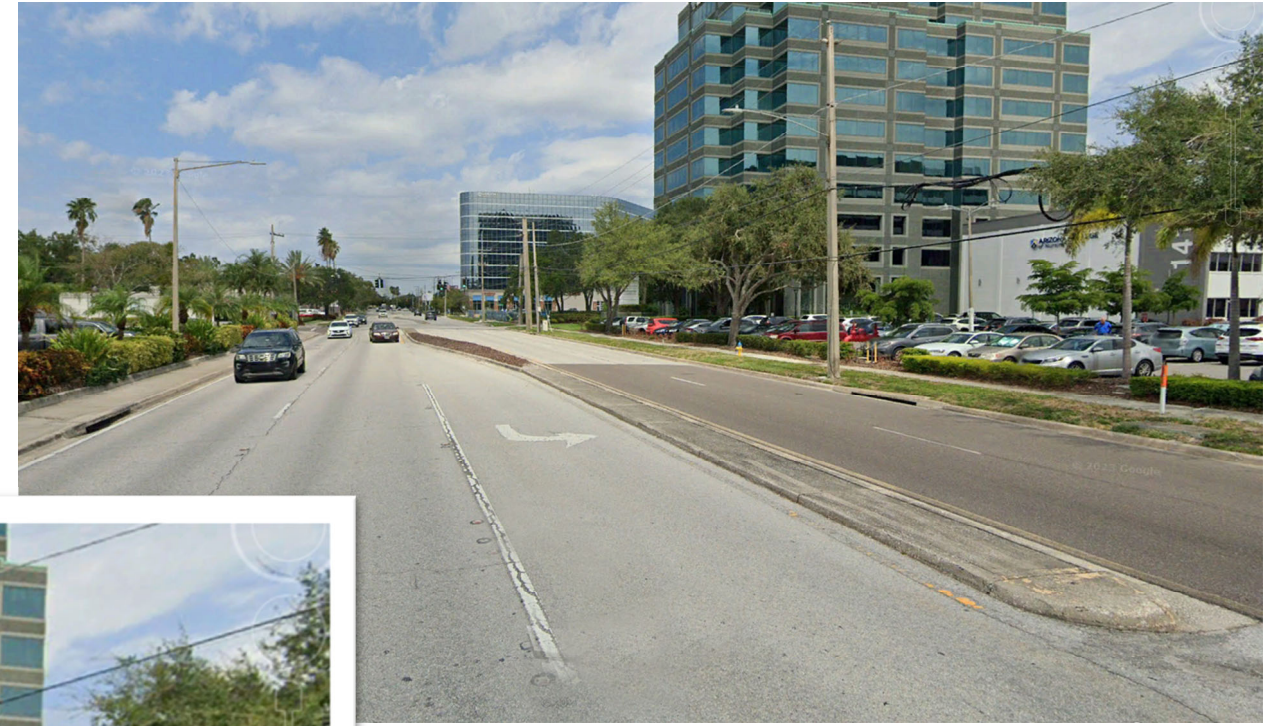


MEDIAN COLORS—PUBLIC ART





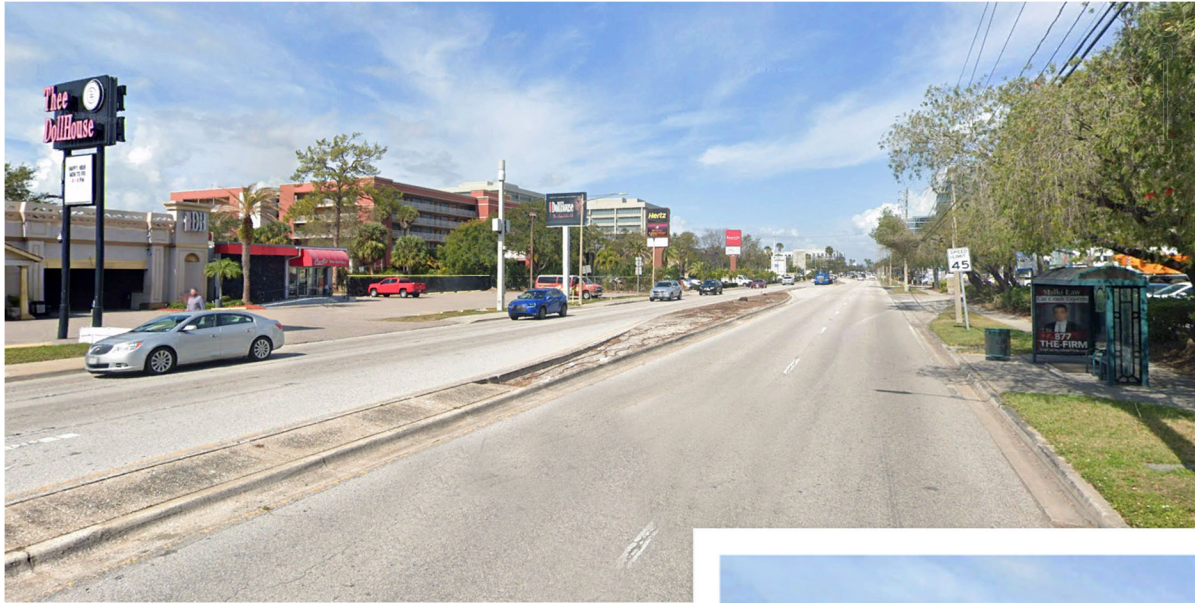




WESTSHORE BOULEVARD MEDIANS  
SHOWING MEDIAN ART AND PLANTINGS  
NOV 6, 2024







WESTSHORE BOULEVARD MEDIANS  
SHOWING MEDIAN ART AND PLANTINGS  
NOV 6, 2024







## WESTSHORE MEDIAN PLANTING DETAIL

- 'Slender Silhouette' SweetGum 4" cal.
- Yucca filamentosa
- Yellow Dw Ixora
- Coontie
- Perennial Peanut







SLENDER SILLHOUETTE SWEETGUM 4" CAL. 24' TALL  
Florida Native Tree species

**HUNTER**  
SHADE TREES EVERGREEN TREES ORNAMENTAL TREES CONTAINER TREES VIEW ALL

## SLENDER SILHOUETTE SWEETGUM 12'

*Liquidambar styraciflua Slender Silhouette 12'*

HEIGHT	WIDTH	ROOT BALL	WEIGHT	AVAILABLE
12-14'	1.5-2.5'	34"	750#	Now

SKU: 103515-12  
Categories: 1 Liquidambar styraciflua Slender Silhouette 12', 0

**ATTENTION LANDSCAPE PROFESSIONALS:**  
Register with Hunter Trees for 24/7 online access to our pricing & availability and our integrated quote system!

**Related Products**



PERENNIAL PEANUT



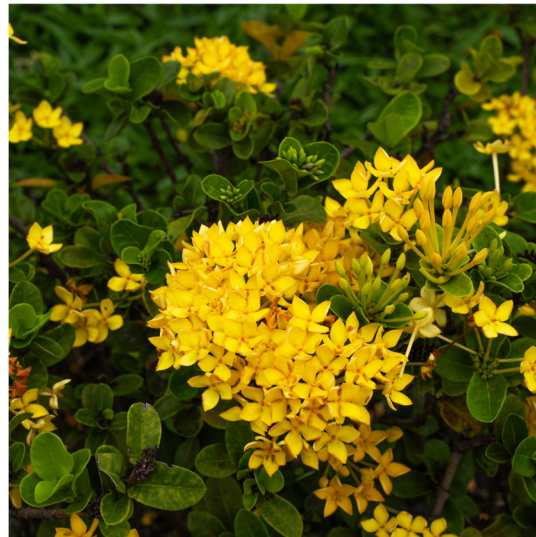
YUCCA GLORIOSA  
Florida Native.



DWARF ILEX  
Florida native species



OPTIONAL AGAVE SUB  
FOR ZAMIA



YELLOW IXORA—OPTIONAL ORANGE IXORA



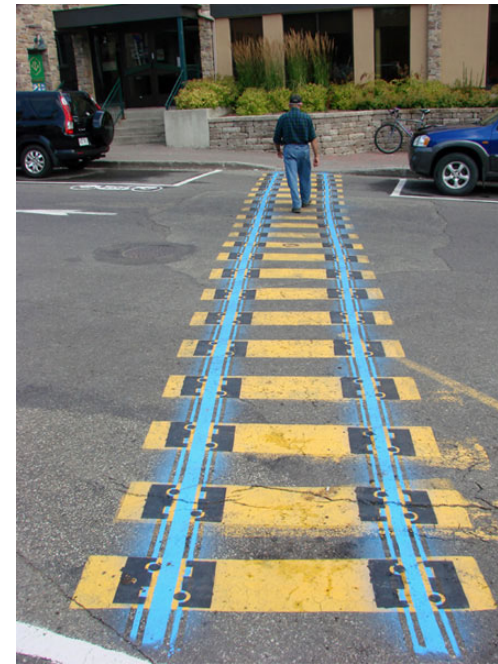
COONTIE (ZAMIA)  
Florida native species



Coonties in traffic median

PLANTING IMAGES





PUBLIC ART EXAMPLES



## **WHATS NEXT:**

- Any revisions that are needed are based on comments from Westshore Alliance. These will be documented and included in the upcoming Final Schematic design document for final approval.
- After review and inclusion of revisions, plans will be sent to our Construction Cost estimator and estimates provided to Westshore Alliance for final approval.
- Modifications if needed, based on feedback from Cost Estimator.
- Submit approved plans to City of Tampa Parks for Maintenance approval and agreement, Hillsborough County and FDOT for approval of design, material locations for sign off and approval.
- Review Government agency comments, provide responses and incorporate them into final plans.
- Final Plans will be prepared as needed to meet agencies approval. Res-submit for agency final approvals.
- Upon final approvals, we will create final Construction Documents with specification, quantities and provide bid documents ready for submittal to contractors for bidding.
- Recommend possible pre-purchase of Tree materials to ensure item will be available as desired for project, rather than contractor substitutions.
- Assist client in bidding plans, answer questions provide any RFI (request for information)
- Provide a construction Kick-off meeting to clearly communicate goals and desires of client to contractor(s).
- Provide site inspections as needed during project
- Provide final inspections and project completion sign-off
- Gather As-builts for use by client and City of Tampa.
- Project completion!